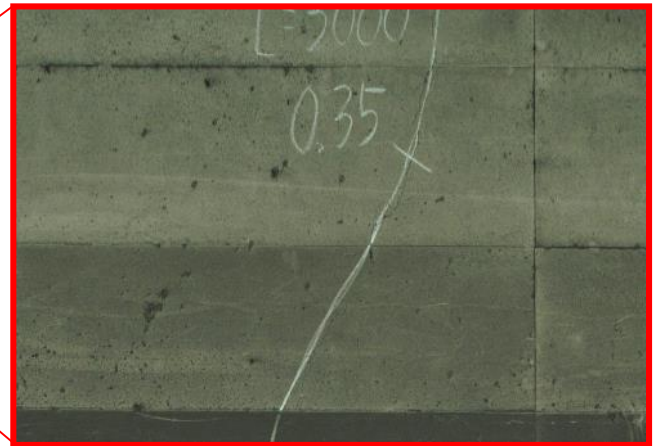
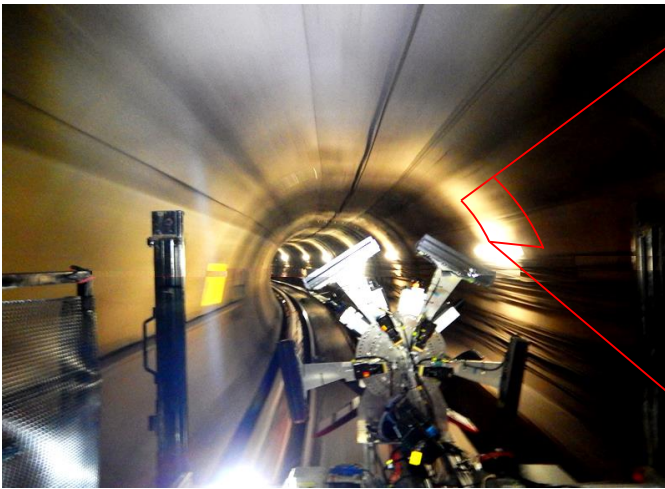


Tunnel Scanning System TM-270

Compact Type Railway Tunnel Scanning System TM-270

Kurabo Tunnel Scanning System TM-270 is an inspection unit designed to scan the lining surface of subway tunnel within its limited on site inspection time. The system is easy to assemble and scan 300 degree lining surface with high resolution all at once. After scanned the tunnel, you can analyze data using our user-friendly software to create deficiency map. This labor-saving system makes your inspection works more efficient!

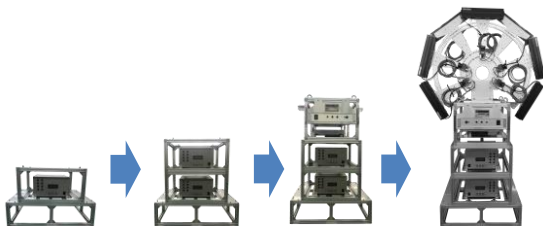


High resolution color line camera captures hair cracks!

About TM-270

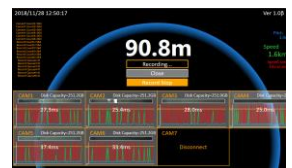
1 Only 4 Steps to Assemble!

Carry the unit by hand to a railway station platform and assemble it within 30 min by 1-2 person!



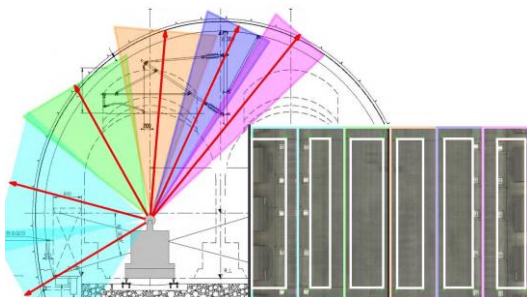
2 One Click Scan

User-friendly software supports you to scan tunnel easily on site.



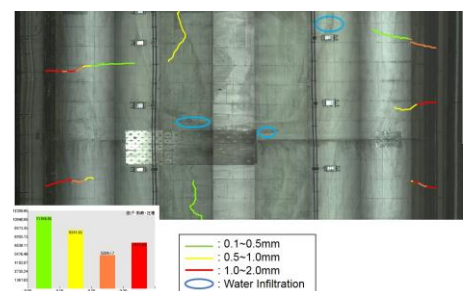
3 Create Lining Image Automatically

Input tunnel shape, then the software creates tunnel lining surface image automatically.



4 Analyze images using software

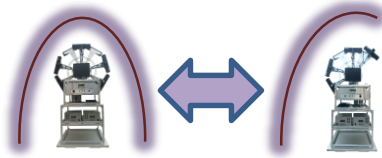
In our software, you can extract cracks automatically and draw defects such as water leaks to create deficiency map. Also available to use images for an equipment inspection.



Operation Flow

Preparation

Set Camera setting



Applicable to wide range of tunnels such as single track, double track, horseshoe shape, circular type, etc.

Field Operation

Assemble the unit



Easy to assemble on site.

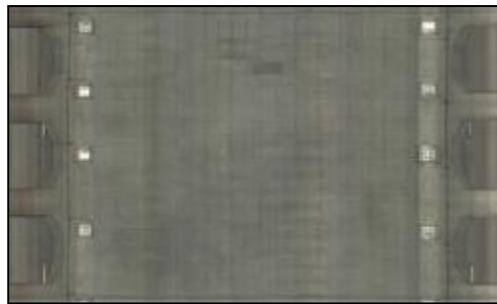


Mount on hand cart or trolley to run.

Scan a target tunnel

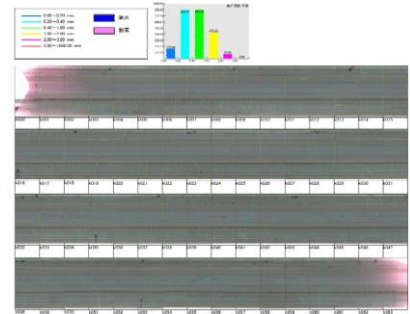
At the office

Create lining surface Image



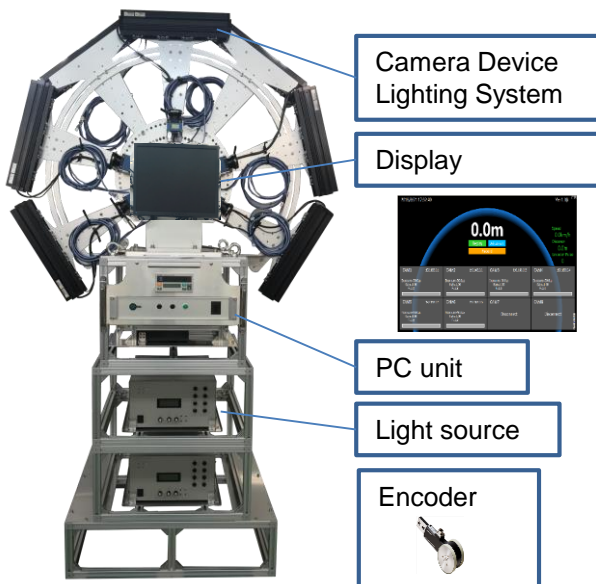
Create the high resolution lining surface image automatically.

Analyze the image to output deficiency map



Create and output deficiency map.

Specification



	Tunnel Scanning System
Camera device	High resolution color line camera
Camera (300 degrees)	7 (Up to 8 depend on tunnel shape)
Lighting system	LED Light
Transversal resolution	1mm/pix
Travel direction resolution	1mm/pix
Survey speed	Walking speed (Up to 20 km/h) * *High speed mode is available as an option
Acquisition	Trigger mode (Encoder) *Speed sensor mode is available as an option
Power	Maximum 1.7kW * *Vary depend on the configuration
Tunnel shape	Maximum tunnel height by approx. 7.5m