

Condition Monitoring for Tunnel Devices

Christian Kuhn, Ferdinand Kaschewski



Condition Monitoring for Tunnel Devices

Benefits



Optimized maintenance through data analysis

By continuously monitoring the device state, it is possible to plan the maintenance deployments much more efficiently, e.g. grouping maintenance tasks. State-dependent maintenance also eliminates unnecessary servicing. The fault causes are known before an on-site service deployment needs to be carried out.



Evidence of compliance with standards and requirements

The states of the devices before and after interventions are documented thereby making it easier to prove or document compliance with standards or requirements.



High availability

With the Monitoring Box from SICK, you can take timely action before a device failure occurs. This significantly increases the availability of the devices in the tunnel.



Predictive maintenance

Changes in the tunnel devices during a particular time period can be monitored and informative prognoses made. By processing and analyzing historical data, it is possible to predict the device state and the required maintenance tasks.



Efficient use of resources

Different maintenance tasks can be grouped depending on the status. You know which servicing tasks are required for which devices before you get to the device in the tunnel.



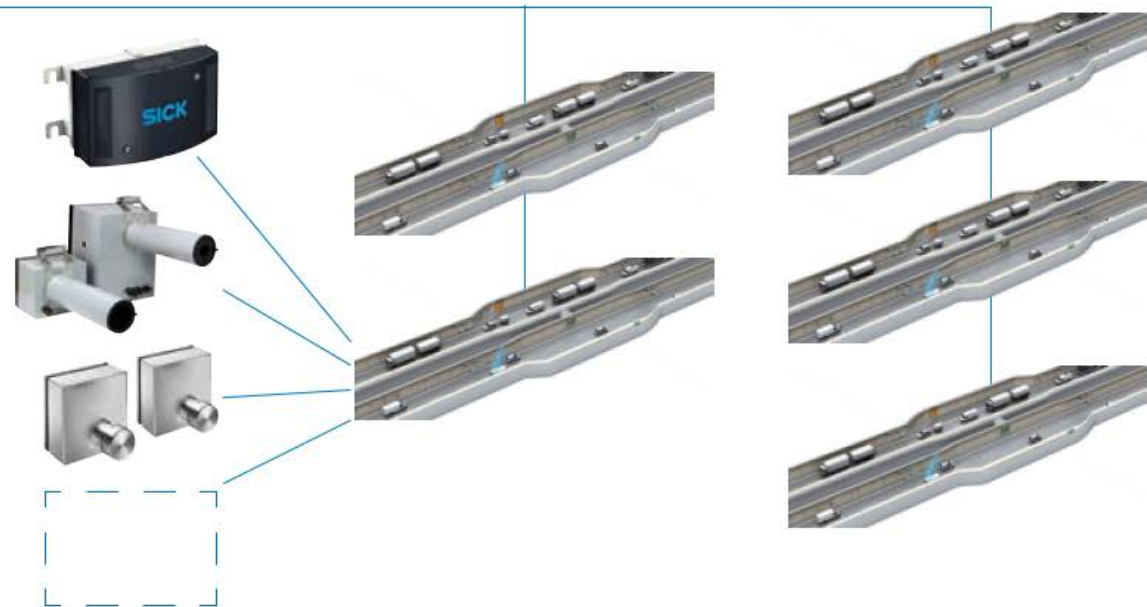
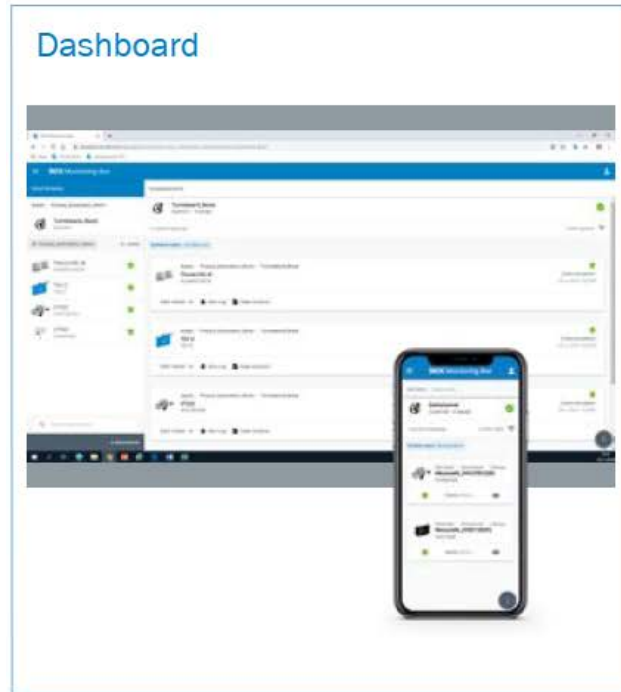
Increase in performance

You always operate your devices in the optimal performance range.

Condition Monitoring for Tunnel Devices

Overview

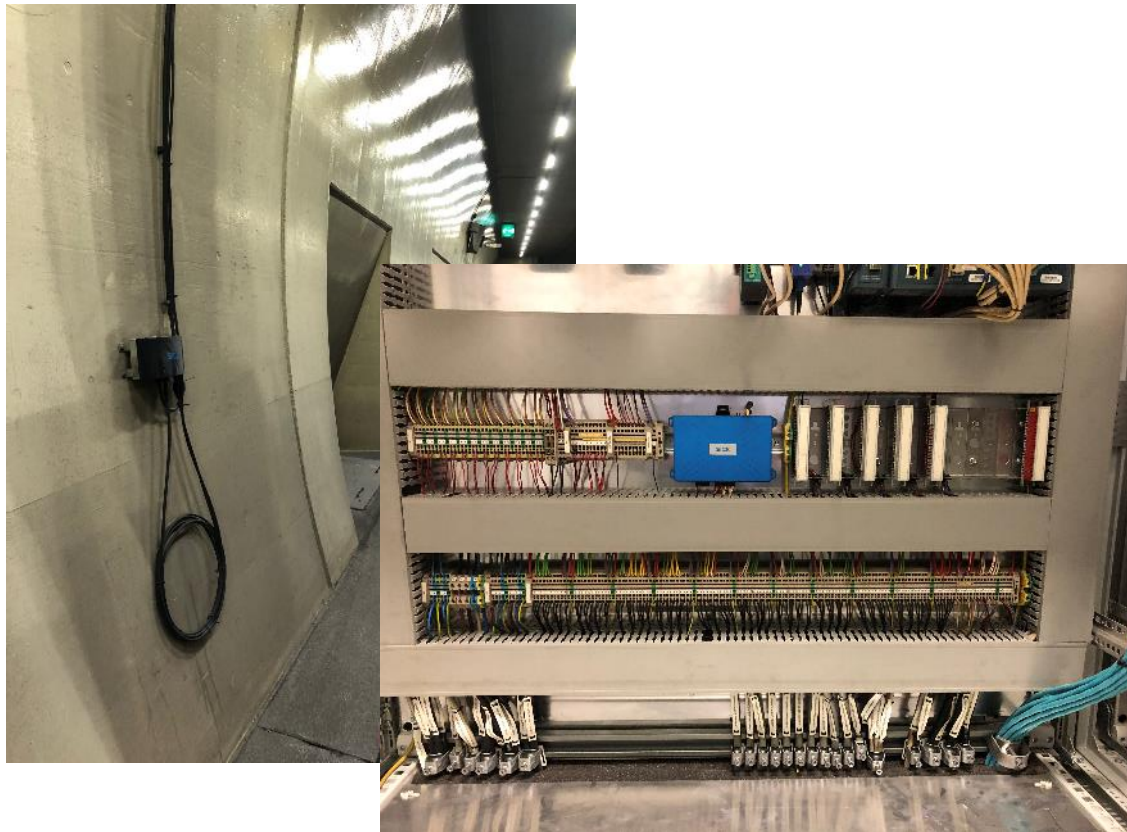
Gain an overview of all tunnels and tunnel sections within one dashboard



Condition Monitoring for Tunnel Devices

Tunnel in Austria

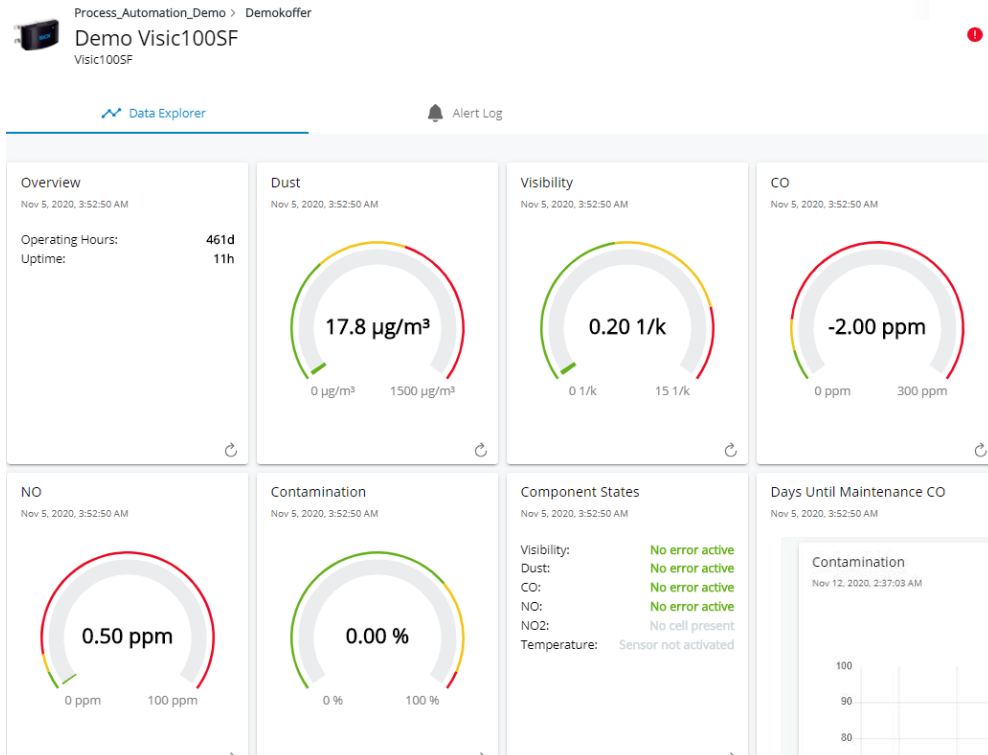
Successful pilot installation with live data!



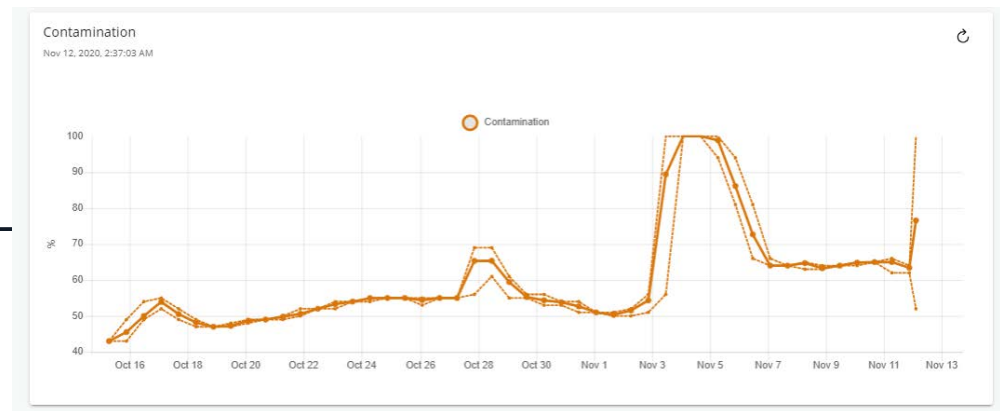
- › Monitoring Gateway collecting data from the VISIC100SF
- › Data is sent to the cloud located in Germany
- › Data will be interpreted and visualized in a web based dashboard
- › Dashboard is accessible from all end user devices that are connected to the internet (PC, Smartphone, Tablet)

Condition Monitoring for Tunnel Devices

The Dashboard



→ Live demo



Condition Monitoring for Tunnel Devices

Customer journey

JUST A FEW STEPS TO A DIGITAL OVERVIEW

1

A SICK service employee installs and activates the gateway. Your devices are connected and data transmission begins immediately.

2

You register with your SICK ID and select the appropriate SensorApps according to the base device to start condition monitoring.

3

You get e-mail alerts if there are error messages, status changes or overshooting of limit values, meaning you can react quicker and easier.



Thank you for your attention